



Benefits:

- ◆ Energy savings: At the same lighting efficiency, it saves 50% energy comparing to traditional fluorescent tube.
- ◆ Environmental friendly: no infrared and UV, no mercury, low heat.
- ◆ Long life: over 30,000 hours.
- ◆ Low buzzing.
- ◆ No flickering: Constant current, reduce light decay, quick start, no flicking, eyes protection.
- ◆ No UV: LED does not produce UV which attracts mosquitoes. Makes neat and comfortable living environment.
- ◆ Ideal replacement: It has the same dimension as traditional fluorescent tube, replace easily.
- ◆ Quick and easy installation to minimize retrofit costs.
- ◆ Flexible application: Works as fluorescent replacement Tube; with LiteMagic's dedicated mounting bracket, it also can be used as cove lighting.

T8 LED Tube

Working Temperature	-20°C ~ +45°C
Voltage Requirement	AC85~265V
Operation Frequency	50Hz~60Hz
Average Life Span	30,000~50,000 hours

Ordering Information

101-20002-01	1.2M SMD,6000K
101-20002-02	1.2M SMD,3000K
101-20002-03	0.6M SMD,6000K
101-20002-04	0.6M SMD,3000K

T8 LED TUBE

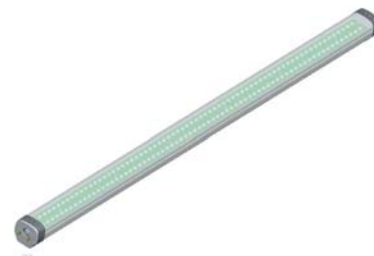
T8 LED Tube is an ideal replacement for traditional T8 fluorescent tube. It has advantages such as high efficiency and stability, high brightness and long life.

With patented technology of thermal controlling and unique aluminum shell, T8 LED tube provides better heat dissipation. Moreover, the special design promises high stability and long life.

T8 LED Tube adopts high efficiency SMD LEDs. At the same lighting efficiency, T8 LED tube only consumes 20W while traditional T8 fluorescent tube consumes 40W. Compared to the traditional ones, T8 LED tube has obvious energy saving feature.

With LiteMagic dedicated mounting brackets, T8 LED Tube can also be used as cove lighting. Its simple design enables rotation and adjustment. It's suitable for different applications. The spacing between T8 cove lights has been minimized to 3cm, which provides smooth and natural color.

T8 LED Tube is gradually replacing traditional lighting fixture. Widely used in office, supermarket, bus, warehouse, counter, etc., it works as general lighting, operation lighting and exhibit lighting.



Comparison between LiteMagic T8 LED Tube with Conventional Florescent Tube

Light	T8 LED Tube 20W	Conventional Florescent Tube 40W
Average Life Span	30,000 hours	10,000 hours
Input Voltage	100V AC ~ 240V AC	120V AC ~ 230V AC
Ballast & Starter needed	No	Yes
Actual Power Consumption	20W	50W
Energy Saving	50%	--
Environmental Friendly	Yes	No

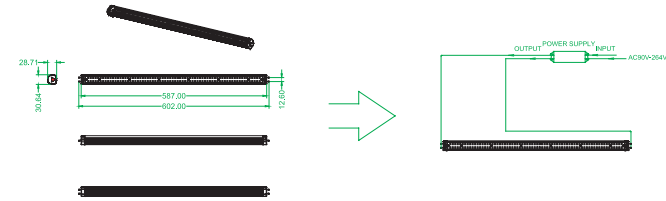
Specifications:

Dimensions(mm)	1200*30	600*30
LED Type	SMD3528	SMD3528
LEDs Quantity(pc)	280	140
Power Consumption(w)	20	10
Comparable to Conventional T8 Tube(w)	40	20
Color Temperature(k)	Warm White: 3000 Pure White: 6000	Warm White: 3000 Pure White: 6000
Output Flux(lumens)	1600-1900	800-950

Installation:

1. T8 LED Tube

- Step 1: Remove the starter and ballast.
- Step 2: Connect the dedicated AC adapter to power cable.
- Step 3: Connect output cables (+/-) to both sides of tube hanger.
- Step 4: Fix T8 LED Tube on the tube hanger correctly (Note: T8 LED Tube's cathode and anode should match with hanger's accordingly).



2. T8 Cove Light

- Step 1: Connect the dedicated AC adapter to power cable.
- Step 2: Connect output cables to T8 Cove light.

